



**Galvanized Iron / galvanized steel roller shutter door, GI rolling shutter door, Steel roll up shutter door, Manual operation security steel roller door, Automatic remote control steel rolling door**

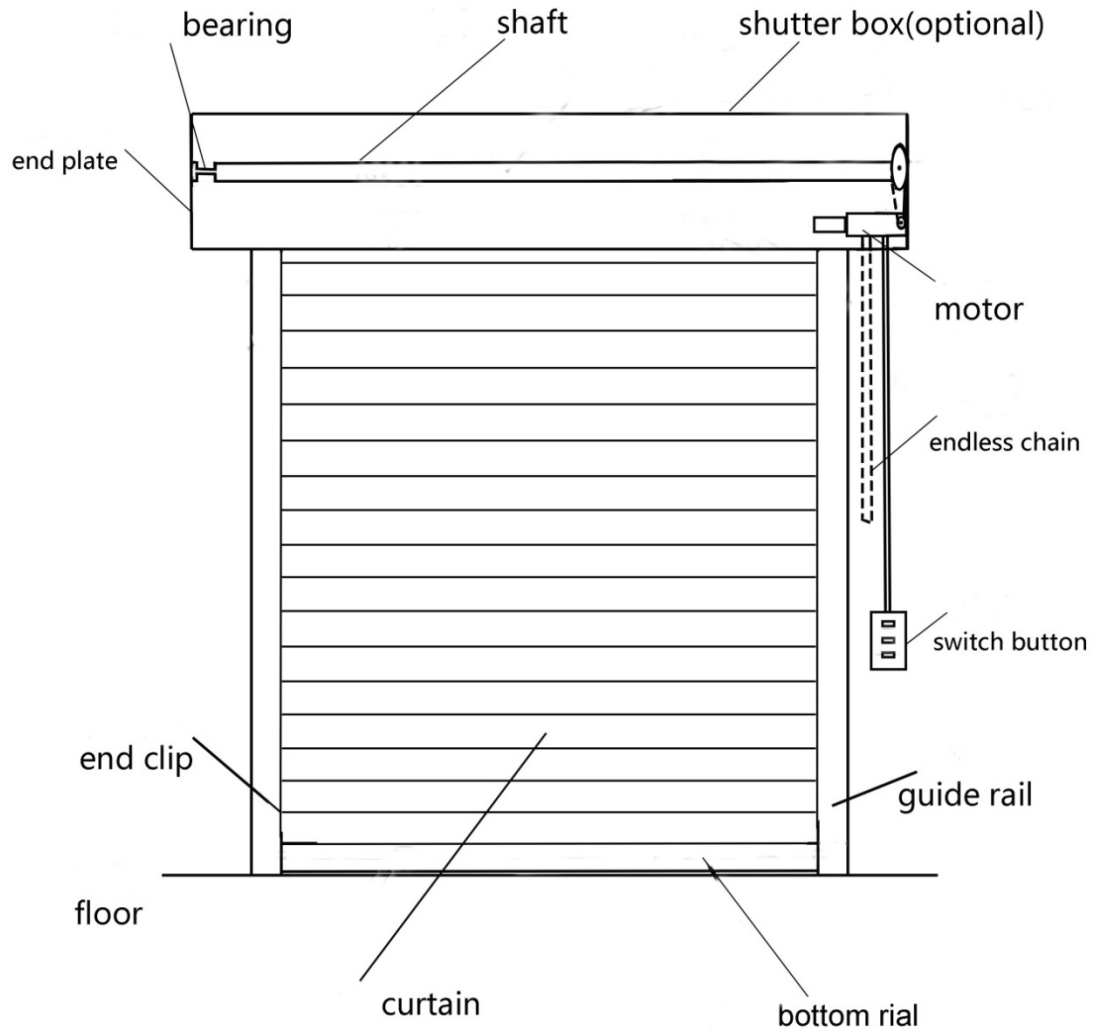
Galvanized steel roller shutter door is the most common roller shutter doors in all over the world. Why? Because it offer high security, as well as in affordable price.

We design and produce a range of steel roller shutters suitable for shop fronts, shopping centers, offices, airports, factories, industrial warehouses, residential garage and virtually any other type of application.

Technical Data Sheet	
Material	Galvanized steel
Size of slat	82 mm pitch height / 110 mm pitch height
Types of Slats	Solid type, Micro-perforated type, Punched type
Slat thickness	0.6 mm,0.8 mm, 1.0 mm, 1.2 mm
Color of Slat	Original color ,white, cream, blue, green, white, customized
Surface finishing	original galvanized , pre-painted, powder coating
Curtain Weight (KG/)	It depends on the slats type
Track thickness	1.2 mm / 1.5 mm strong track
Motor	Side motor, Tubular motor
Operation	Manual: with lock and Spring box system Automatic: with motor, remote control and switch button
Max width	12,000 mm
Max height	9,000 mm
Optional	Photocell (infrared safety sensor), shutter box, UPS, Mobile control and inspection

## Drawing

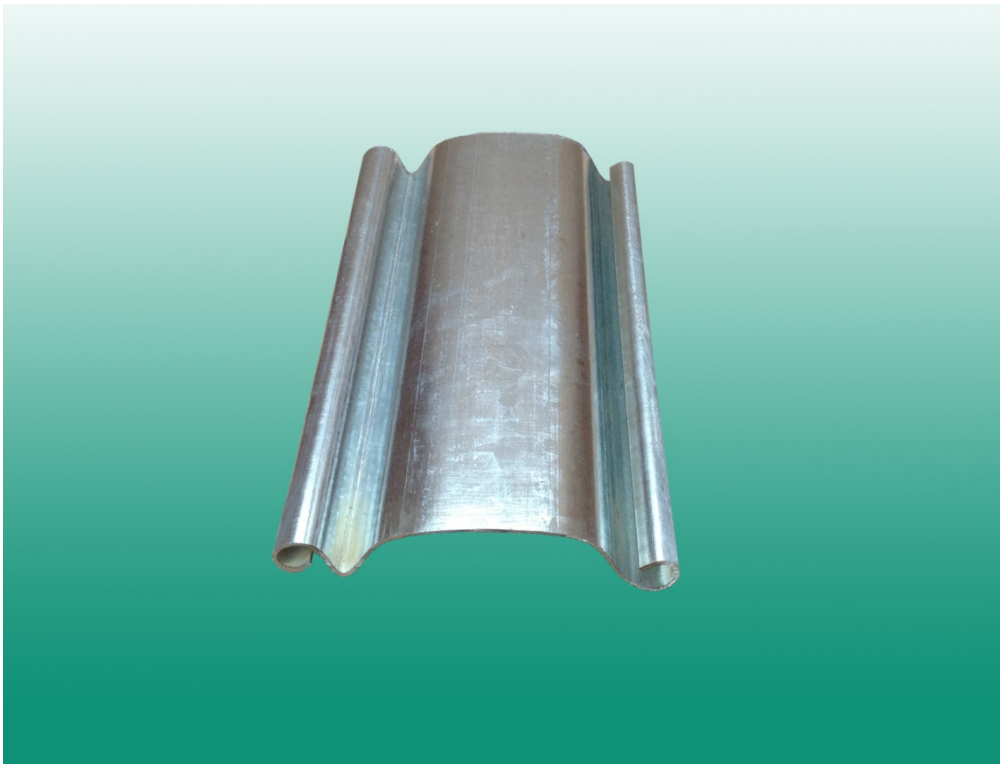
### Galvanized steel roller shutter door (motorized operation)



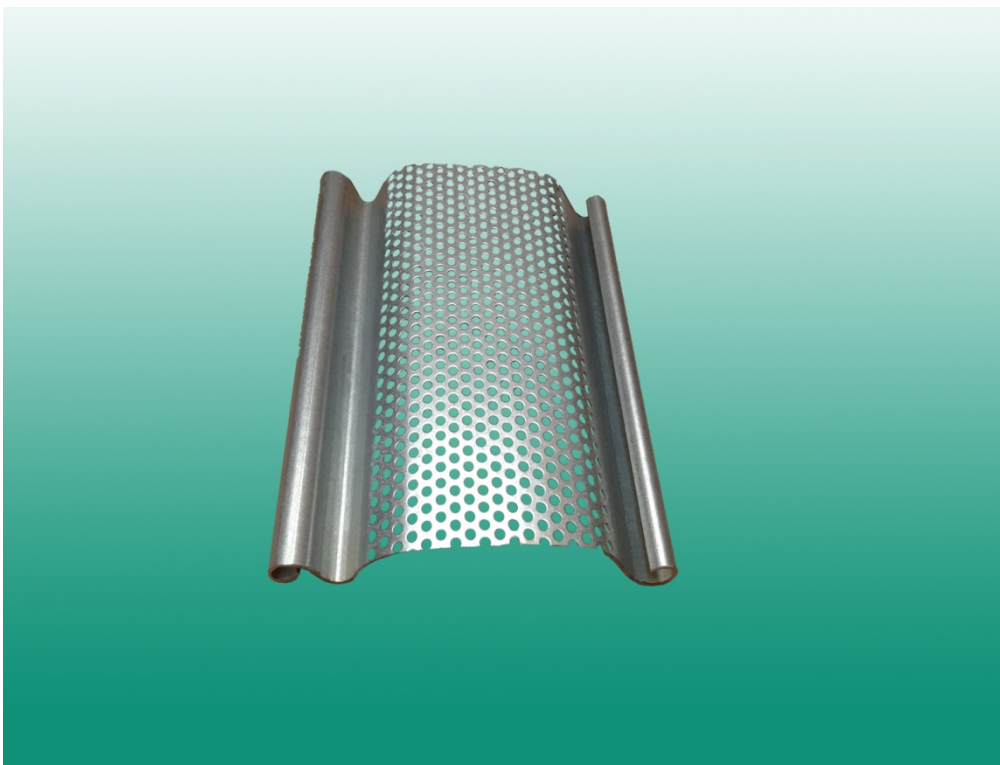
#### Descriptions:

- 1, Galvanized steel slat
- 2, Steel end clips
- 3, Galvanized steel bottom rail
- 4, Galvanized steel guide rail
- 5, Shaft (roller drum)
- 6, Motor and motor accessories
- 7, Shutter box

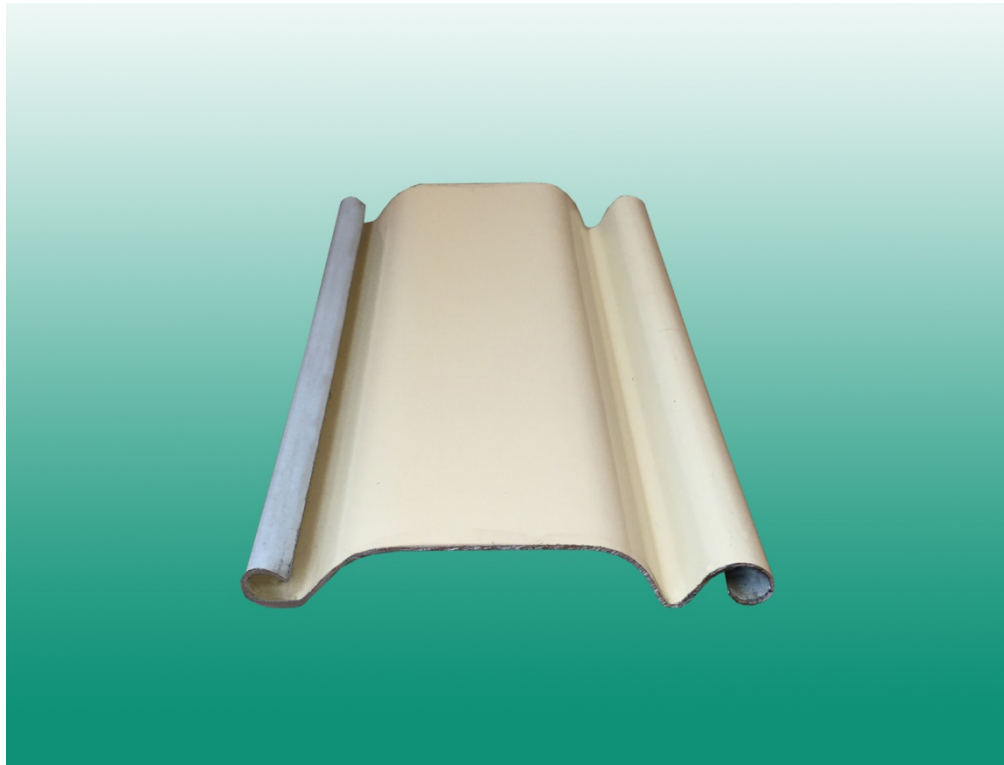
## Specifications



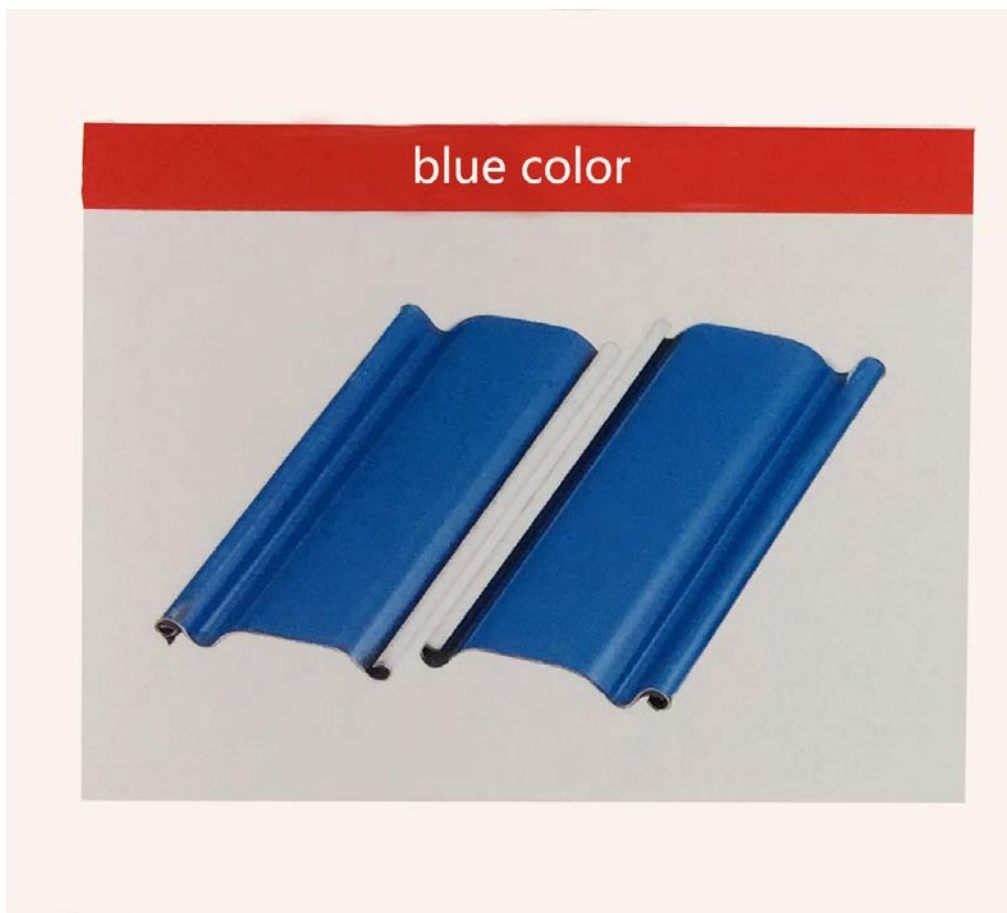
**82 mm Solid type, original color**



**82 mm Micro-perforated type, original color**



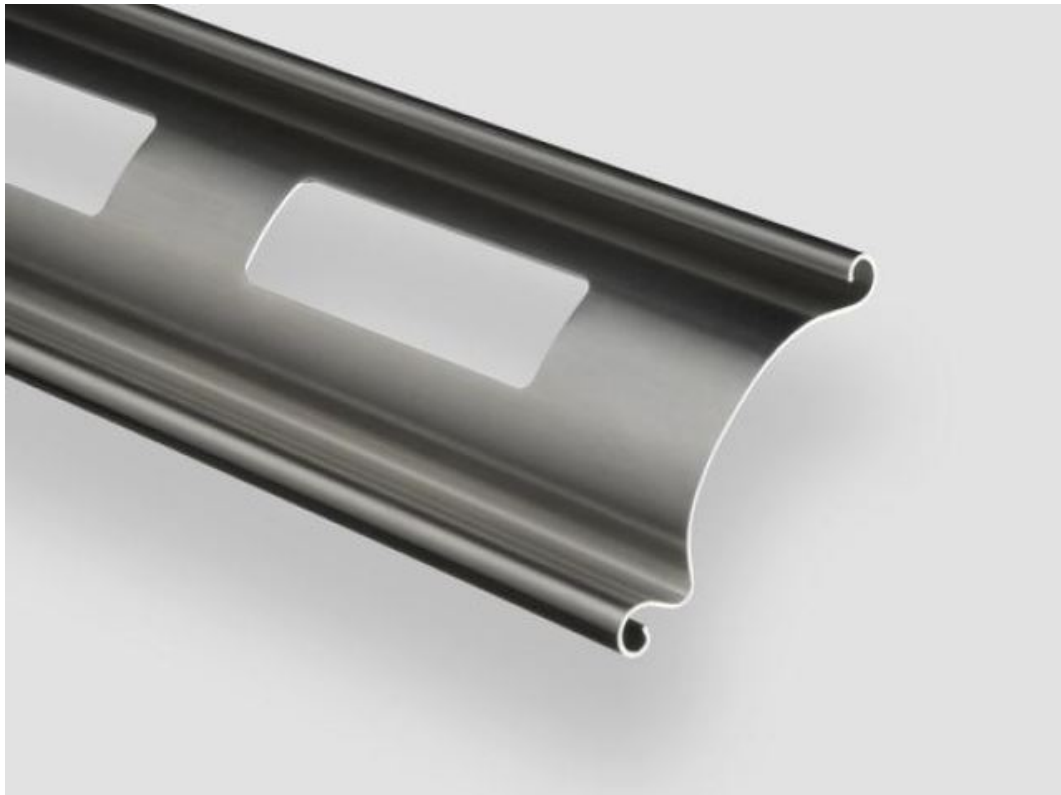
**110 mm solid type, beige color**



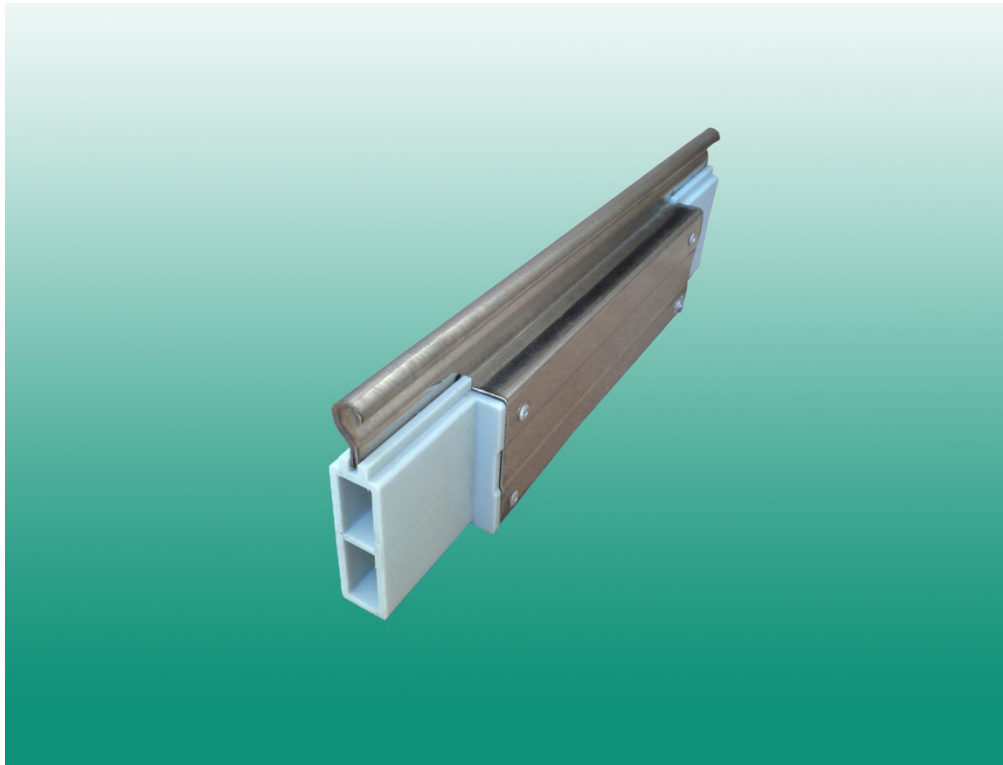
**82 mm solid type, blue color**



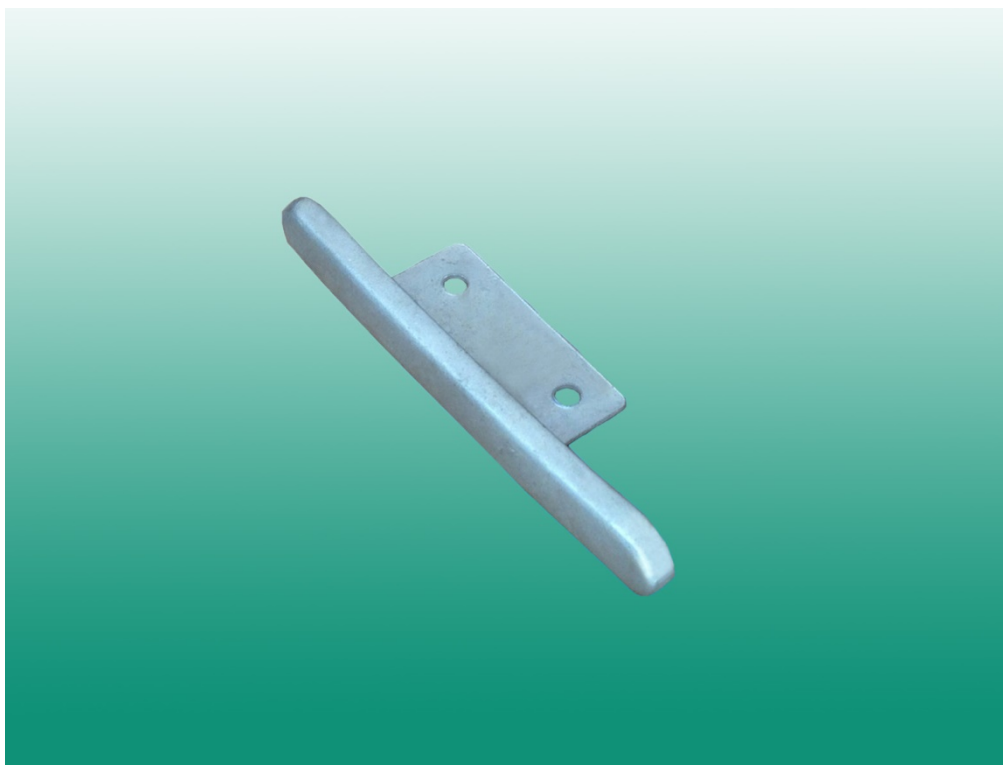
**82 mm solid type, green color**



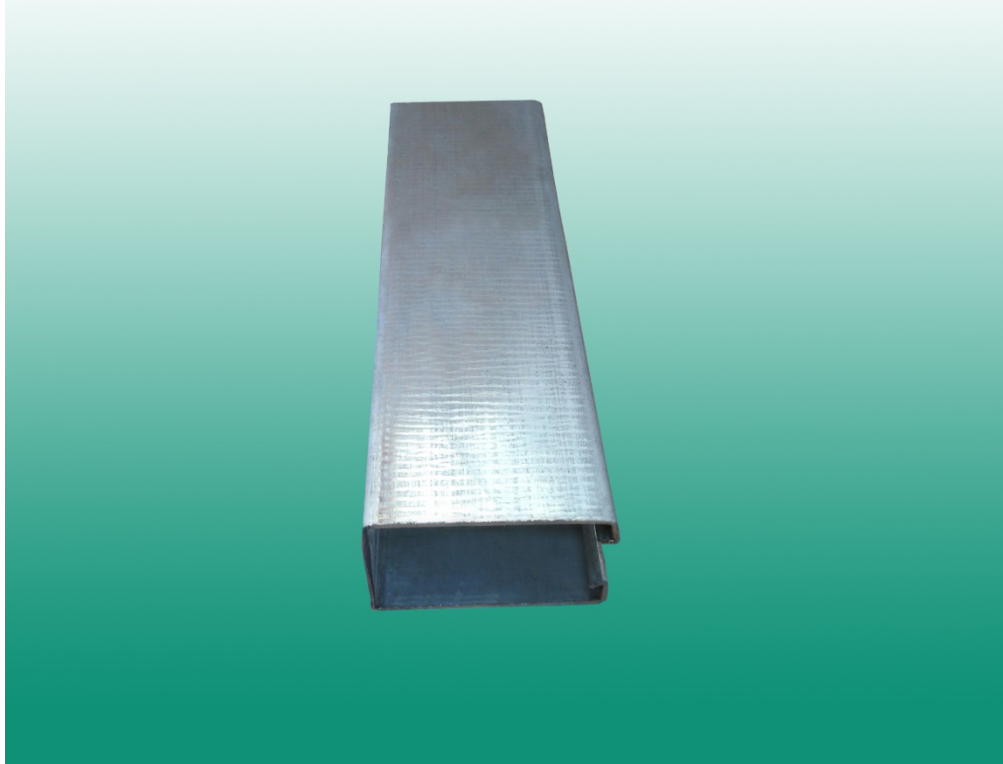
**82 mm punched type, original color**



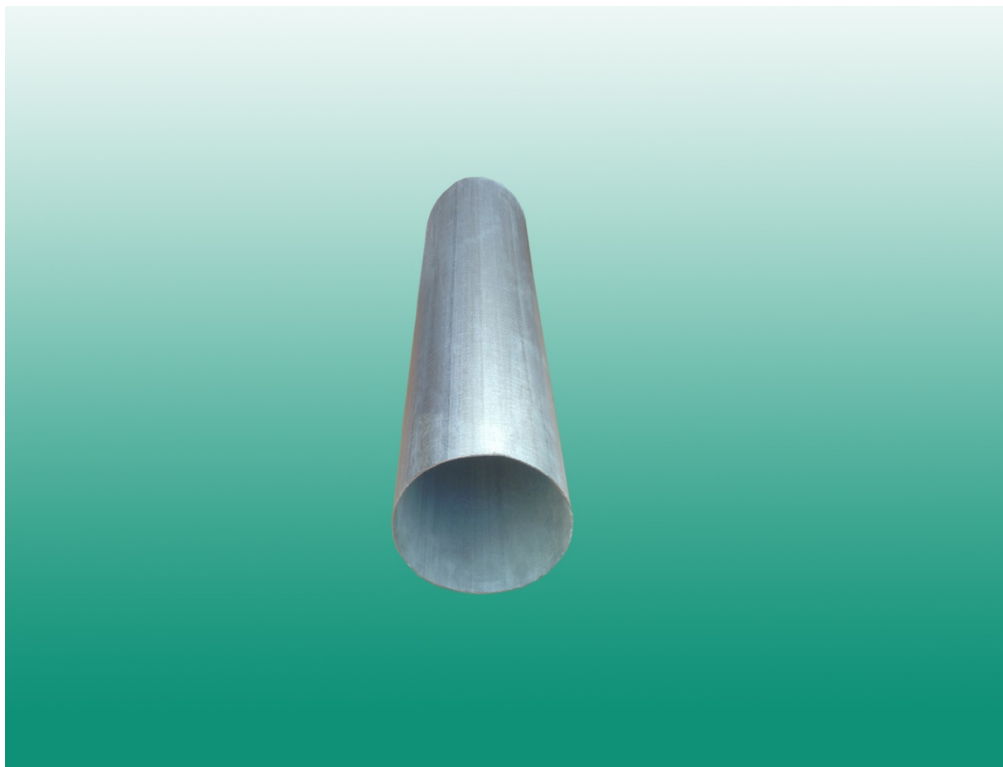
**Galvanized steel bottom rail with plastic insert**



**Steel end clips**



**70 mm galvanized steel guide rail, original color, 1.2 mm thickness**

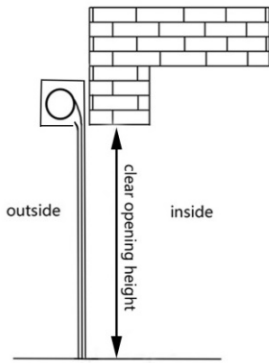


**Galvanized steel shaft (5 inches), 1.5 mm thickness. Others size and thickness are available if needed.**

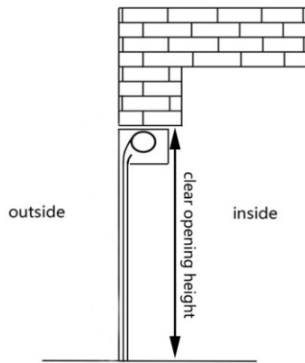
# Installation way

## For the height

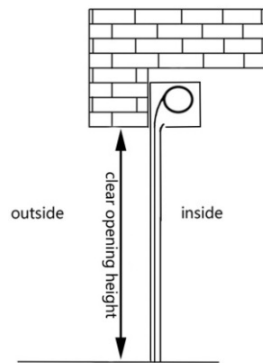
A: Outside installation



B: Middle installation

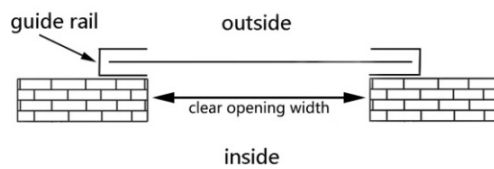


C: Inside installation

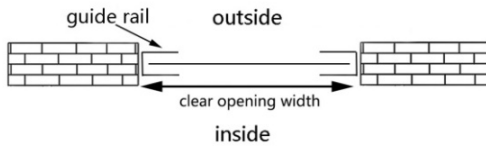


## For the width

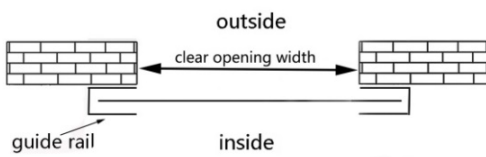
A: Outside installation



B: Middle installation



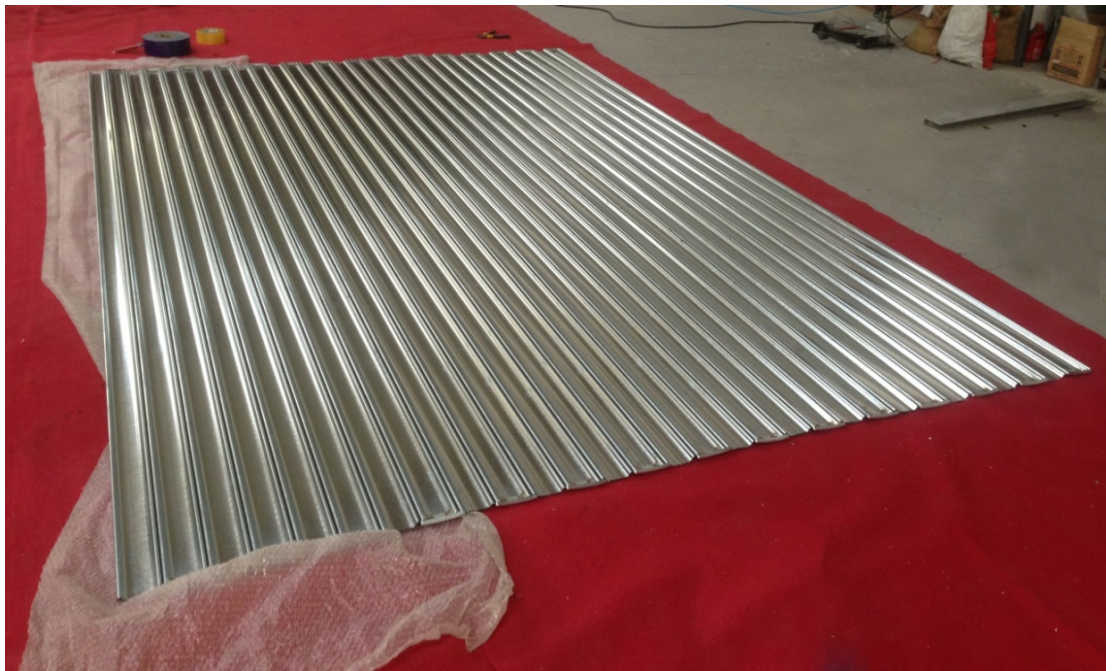
C: Inside installation

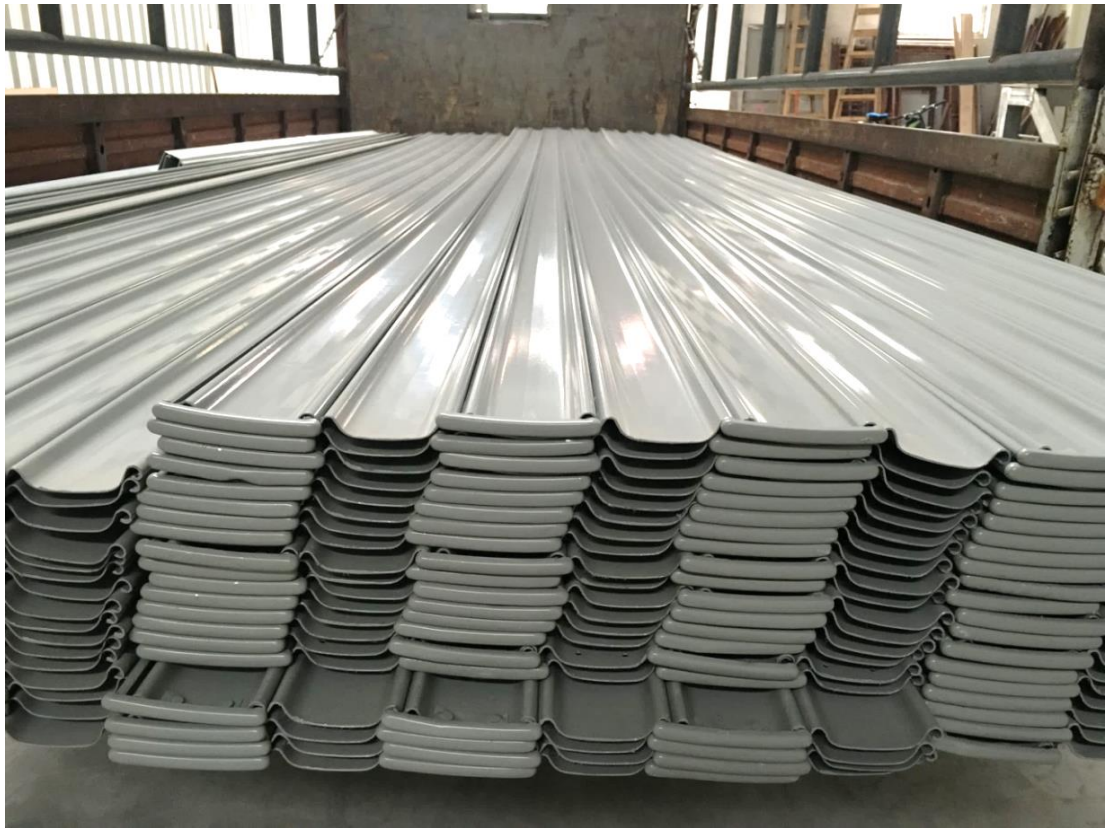
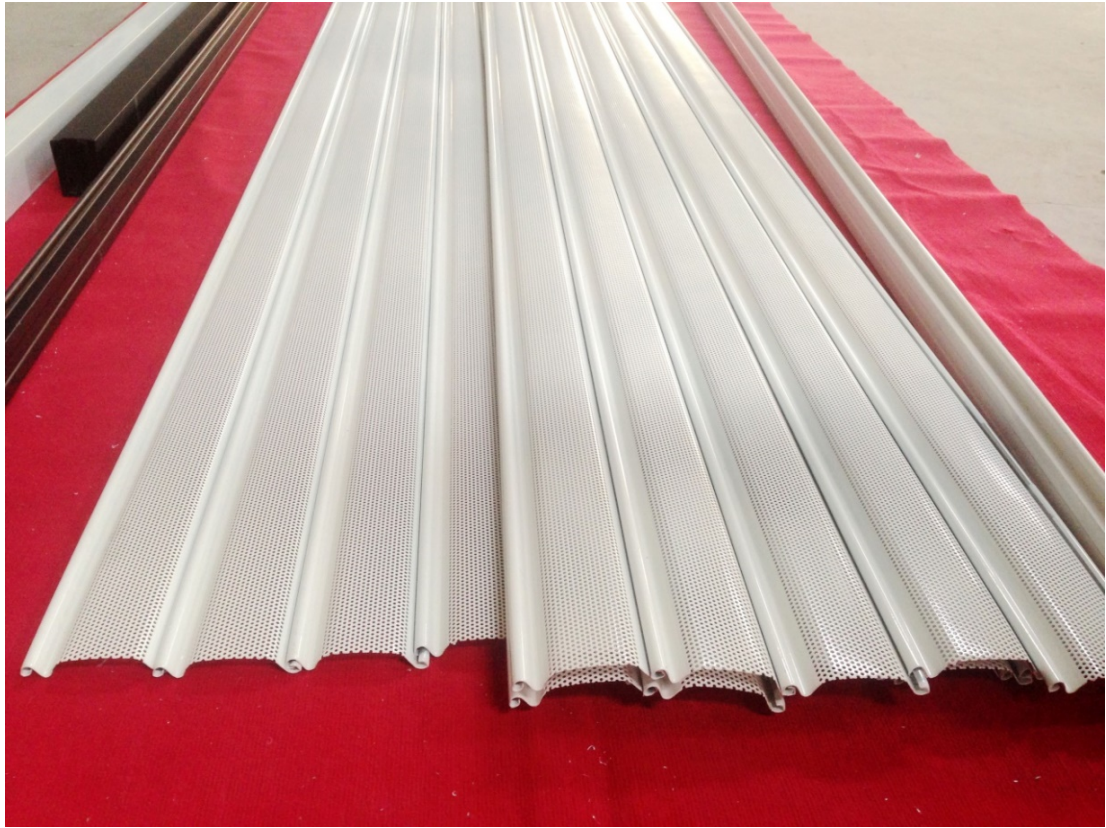




## HEEHO factory overview











**Project photos**



## FAQ

1, What's the MOQ ?

- We accept small orders, for example, 1 set.

2, What information do you need before order placing?

- First, please advise us the clear opening size and quantity.
- Second, please let us know the installation way (fixed inside, fixed middle, fixed outside).
- Operation way: manual operation or motorized operation(with remote control) ?
- Price term: EXW, FOB, CIF or DDP ?

3, what's the max width and height for this type of roller shutter door?

- Max width: 12,000 mm
- Max height: 10,000 mm

4, How do you pack the goods?

- For FCL, we will pack the goods by bubble bag wrapped and carton paper.
- For LCL, we will pack the goods by wooden box.

5, Do you have installation instruction manual ?

- Yes, sure. The instruction manual will be sent together by goods, or we will send it by email.
- Also, we will put the installation video on Youtube and send the link.

6, How many years warranty do you offer?

- 3 years for roller shutter doors.
- 5 years for roller shutter motor.

## **Guangzhou Heeho Doors Company Limited**

Tel:+86-20-39004566

E-mail:info@iheeho.cn Website:www.iheeho.cn

Add:No.C112-C116 Tainan Road, NanSha District, Guangzhou, China